

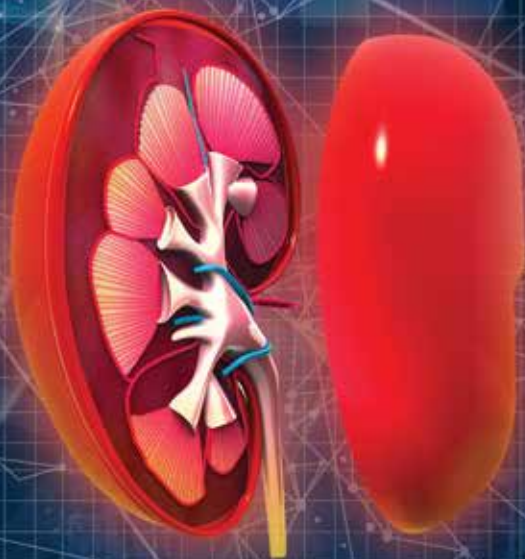
CME Symposium

IN ASSOCIATION WITH THE 5th
LIVE IN-PERSON ONLINE



EARN
CME
ABIM-MOC
CREDITS
1.75

Kidney Disease and the Heart in Diabetes and Beyond—Circa 2021



Saturday, September 11, 2021
6:45 pm – 8:30 pm EST
Sheraton Times Square
New York, New York

Dinner will be served

All content available ON-DEMAND for 90 DAYS following the meeting.

This is a CME Symposium Supported by an Educational Grant from **AstraZeneca**

Free for all 5th HiD Attendees Register online www.heartindiabetes.com/registration

Jointly Provided By:



Administered By:





KIDNEY DISEASE AND THE HEART IN DIABETES & BEYOND – CIRCA 2021

CHAIRS: **Yehuda Handelsman, MD • Matthew Weir, MD**

7:00 pm	Introduction & Pre-CME Questions Yehuda Handelsman, MD
7:05 pm	CKD Impact on Health and Disease Ian De Boer, MD
7:25 pm	Contemporary Approach to Prevention Management of Heart Failure Robert J. Chilton, DO
7:45 pm	Emerging Concepts in Management of CKD – the Prevention of Morbidity and Mortality Robert D. Toto, MD
8:05 pm	Panel Discussion and Q&A: Kidney and Heart Diseases – Causality Dilemma Panel: Yehuda Handelsman, MD • Ian De Boer, MD • Scott Solomon, MD • Robert D. Toto, MD Moderator: Matthew Weir, MD
8:25 pm – 8:30 pm	Concluding Remarks & Post-CME Questions

Program Description

Kidney disease and type 2 diabetes (T2D) share a common etiology like hyperglycemia, hypertension, inflammation, oxidative stress, and others. All of these pathophysiologic factors contribute to the development of chronic kidney disease (CKD). CKD and T2D are affecting 14% and 11% of the US population, respectively. Most alarmingly, 36% of patients with diabetes also have CKD double their risk of cardiovascular events and triple the risk of heart failure (HF). As a class, sodium glucose cotransporter 2 (SGLT2) inhibitors are increasingly recognized as an effective therapy beyond T2D, affecting CKD and Heart failure independent of glycemia. Recently the SGLT2i dapagliflozin was indicated to manage CKD and HF with and without diabetes. In this satellite symposium we will explore the evidence leading to these indications and address the contemporary approach to the prevention and management of the complex and challenging patients with CKD, HF with and without Diabetes.

Learning Objectives

Upon completion of this CME symposium, participants should be able to:

- Discuss the epidemiology and etiology of CKD and its pathophysiologic connections to other cardiometabolic conditions.
- Compare and contrast recommendations for HF with reduced ejection fraction (HFrEF) and HF with preserved ejection fraction (HFpEF) and describe the role of SGLT2 inhibitors in management of both conditions.
- Evaluate evidence supporting use of SGLT2 inhibitors in patients with CKD, including those with and without T2D
- Develop management strategies for the cardiorenal syndrome, considering pathophysiologic links between CKD, T2D, and cardiovascular disorders.

Target Audience

This educational initiative is designed for cardiologists, nephrologists, endocrinologists, internists, family physicians, and other healthcare professionals interested in the epidemiology, pathophysiology, prevention, and treatment of CKD and HF and prevention of morbidity and mortality.

FACULTY 2021



Matthew R. Weir, MD, Chair
Professor of Medicine Chief of Nephrology
University of Maryland School of Medicine
Nephrology Division
Department of Medicine
University of Maryland School of Medicine
Baltimore, Maryland



Yehuda Handelsman, MD, FACP, FNLA, FASPC, MACE, Chair
Medical Director & Principal Investigator
The Metabolic Institute of America
Chair & Program Director, WCIRDC/HiD
Tarzana, California



Ian De Boer, MD, MS
Professor of Medicine, Division of Nephrology
Adjunct Professor of Epidemiology
Associate Director, Kidney Research Institute
University of Washington
Seattle, WA



Robert J. Chilton, DO
FACP, FACC, FAHA, MACOI, FASCAI
Professor of Medicine
Department of Medicine Division of Cardiology
The University of Texas
Health Science Center
San Antonio, Texas



Robert D. Toto, MD
Professor of Medicine
Associate Dean for Clinical and Translational Research
University of Texas
Southwestern Medical Center
Dallas, Texas

CME DINNER SYMPOSIUM

This CME Supported Symposium is

Free for 5th HiD attendees and will stay on demand for 90 DAYS following the meeting

Learn more at www.heartindiabetes.com/cmesymposium

This CME Supported Symposium is included with the 5th HiD hybrid meeting

To register to the entire Heart in Diabetes meeting

please visit www.heartindiabetes/registration

This activity has been planned and implemented in accordance with the Essential Areas and Policies of the Accreditation Council for Continuing Medical Education (ACCME) through the joint providership of PESI Inc., and Metabolic Endocrine Education Foundation (MEEF). PESI, Inc. is accredited by the ACCME to provide continuing medical education for physicians.

PESI, Inc. designated this live educational activity for a maximum of 1.75 AMA PRA Category 1 Credit(s).

Physicians should only claim credit commensurate with the extent of their participation in the activity.

For more information, please contact: info@tmioa.com or 818.342.1889

This is a CME Program Supported by an Educational Grant from **Astrazeneca**

**Metabolic Endocrine Education Foundation
18372 Clark Street # 212 Tarzana, CA 91356**

NONPROFIT
ORG
US POSTAGE PAID
VAN NUYS, CA
PERMIT # 659

Register online: www.hearfindiabetes.com/CMEsymposium