

CME Symposium

IN ASSOCIATION WITH THE 7th



EARN
CME
ABIM-MOC
CREDITS
1.5

New Frontier in Diabetes Kidney and Heart Disease

Saturday June 10, 2023
6:30 pm – 8:00pm EST
Hilton Penn's Landing
Philadelphia , PA

DINNER WILL BE SERVED

All content available ON-DEMAND for
ONE YEAR following the meeting.

This is a CME Symposium Supported by an Educational Grant from **Bayer**

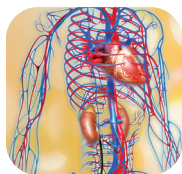
Free for all 7th HiD Attendees. Register online www.heartindiabetes.com/registration

Jointly Provided By:  **MEEF**
FOUNDATION

 **PESI**

ABIM
CME MOC
ACCREDITED

Administered By:  **TMIOA**



NEW FRONTIER IN DIABETES KIDNEY AND HEART DISEASE

CHAIRS: **George Bakris, MD • Yehuda Handelsman, MD**

6:30 pm	Introduction & Pre-CME Questions George L. Bakris, MD
6:40 pm	From Kidney to Heart Disease- Albuminuria, Inflammation, and Fibrosis Robert Toto, MD
7:00 pm	Finerenone Effects on Metabolism, Morbidities, and Mortality in CKD and T2D Mikhail N. Kosiborod, MD
7:20 pm	The Changing Trajectory of DKD George L. Bakris, MD
7:40 pm	Panel Discussion, Q&A, and Post-CME: Impact of Pathophysiology-Based Treatment on Outcome Panel: George L. Bakris, MD, Vivian A. Fonseca, MD, Mikhail N. Kosiborod, MD, Robert Toto, MD Moderator: Yehuda Handelsman, MD
7:55 pm	Post-CME Questions & Concluding Remarks
8:00 pm	Adjourn

Program Description

Diabetic kidney disease (DKD) and type 2 diabetes (T2D) share a common etiology involving hyperglycemia, hypertension, inflammation, oxidative stress, fibrosis, mineralocorticoid receptor activation and increased renin-angiotensin-aldosterone system (RAAS) activity, and all of these pathophysiologic factors contribute to the development of chronic kidney disease (CKD). Both CKD and T2D are common, and together more than doubles the risk of CVD and triples the risk of heart failure.

This satellite symposium will address the pathophysiology of, and screening for- DKD. It will explore the complex challenges of treating these patients and review the contemporary approach to their management highlighting the role of the less known finerenone a non steroidal MRA in reducing progression to ESKD, HF CVD and mortality. The program will examine the changing trajectory of diabetic kidney disease and discussing the Impact of Pathophysiology Based Treatment on Outcome.

Learning Objectives

Upon completion of this CME symposium, participants should be able to:

- Describe the etiologic and pathophysiologic links between CKD, T2D, HF, and CVD and the disease burden of CKD and associated cardiometabolic conditions.
- Discuss the current standards and timing of screening and diagnosing CKD in DM
- Compare and contrast the benefits and limitations of treatments indicated for CKD management, including RAAS blockade agents, first generation MRAs, and SGLT2 inhibitors
- Discuss the evidence for the efficacy, safety, and clinical outcomes of finerenone based on the results of FIDELIO and FIGARO and their role in optimizing cardiorenal outcomes in the management of chronic kidney disease (CKD) in patients with type 2 diabetes (T2D)
- Design optimal pillars based therapeutic regimens for the prevention and management of CKD progression in diabetes to reduce comorbidities and mortality

Target Audience

This educational initiative is designed for cardiologists, nephrologists, endocrinologists, primary care physicians, internists, and other healthcare professionals interested in the Epidemiology, pathophysiology, prevention, and treatment of diabetes with CKD and prevention of related morbidity and mortality.

FACULTY



George L. Bakris, MD Chair
Professor of Medicine Director,
AHA Comprehensive Hypertension Center
University of Chicago Medicine
Chicago, Illinois



Yehuda Handelsman, MD Chair
FACC, FAHA, FACP, FNLA, FASPC, FAHA, MACE
Medical Director & Principal Investigator
The Metabolic Institute of America
Chair Scientific Advisory board, DCMi— Diabetes
CardioRenal & Metabolism Institute
Chair & Program Director, Heart in Diabetes
Tarzana, California



Mikhail N. Kosiborod MD
FACC, FAHA
Professor of Medicine
Saint Luke's Mid America Heart Institute
University of Missouri-Kansas City
School of Medicine
Chair, Heart in Diabetes
Kansas City, Missouri



Robert Toto, MD
Professor of Medicine Associate
Dean Translational Science and Education
Distinguished Teaching Professor Director,
Center for Translational Medicine
Principal Investigator,
UT Southwestern CTSA Program
Dallas, Texas



Vivian A. Fonseca, MD, FRCP
Professor of Medicine and Pharmacology
Assistant Dean for Clinical Research
Tullis Tulane Alumni
Chair in Diabetes Chief, Section of Endocrinology
Tulane University Health Sciences Center
New Orleans, Louisiana

CME DINNER SYMPOSIUM

This CME Supported Symposium is **FREE** for 7th HiD attendees and will stay on demand
for **ONE** year following the meeting

Learn more at www.heartindiabetes.com/cmесymposium

To register to the entire Heart in Diabetes meeting
please visit www.heartindiabetes.com/registration

This activity has been planned and implemented in accordance with the Essential Areas and Policies of the Accreditation Council for Continuing Medical Education (ACCME) through the joint providership of PESI Inc., and Metabolic Endocrine Education Foundation (MEEF). PESI, Inc. is accredited by the ACCME to provide continuing medical education for physicians.

Administrated by the Metabolic Institute of America

PESI, Inc. designated this live educational activity
for a maximum of 1.5 AMA PRA Category 1 Credit(s).

Physicians should only claim credit commensurate with the extent
of their participation in the activity.

For more information, please contact: info@tmioa.com or 818.342.1889

This is a CME program Supported by an Educational Grant from **BAYER**